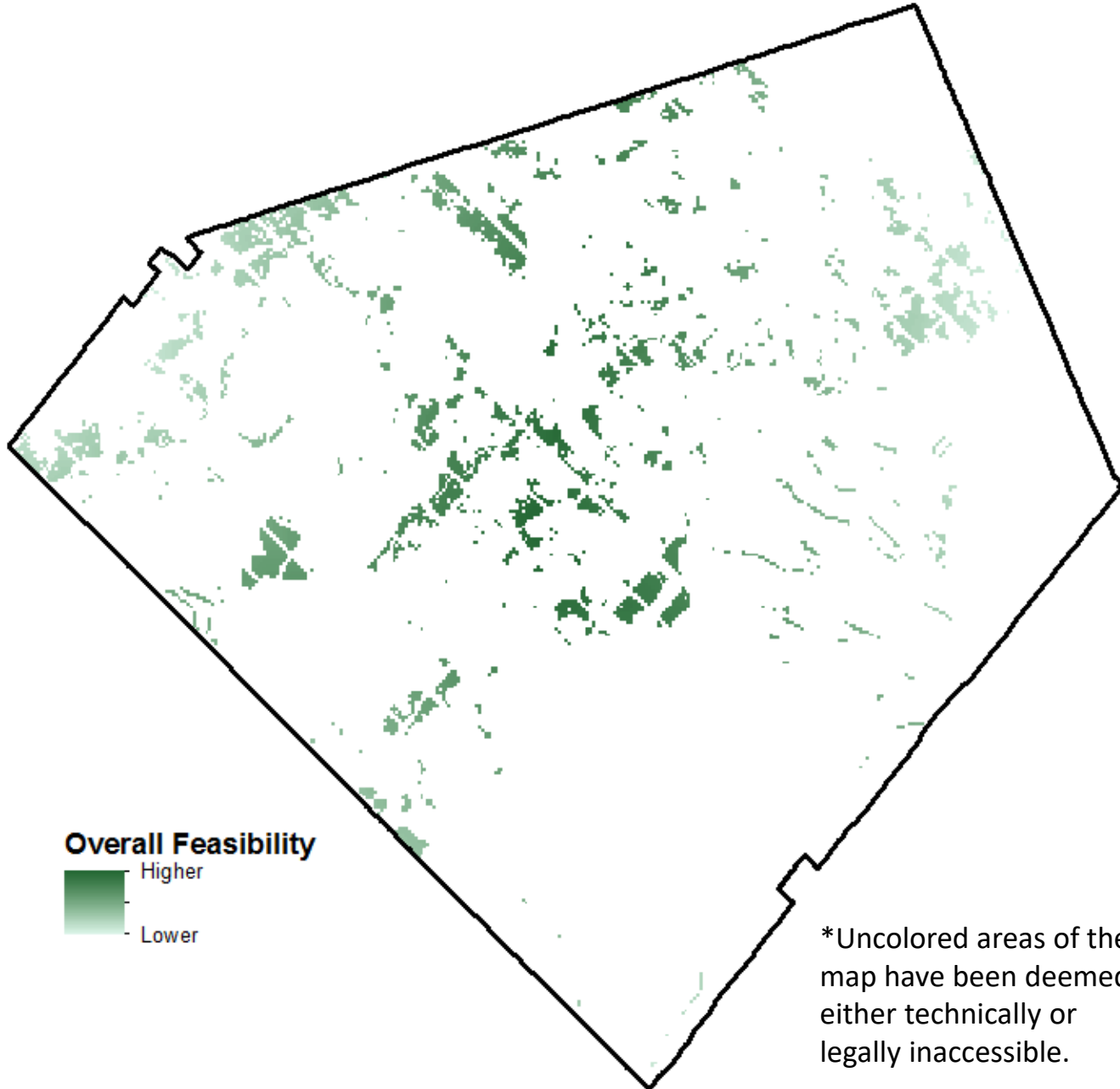


# AREAS OF OPPORTUNITY FOR UTILITY-SCALE SOLAR FARMS

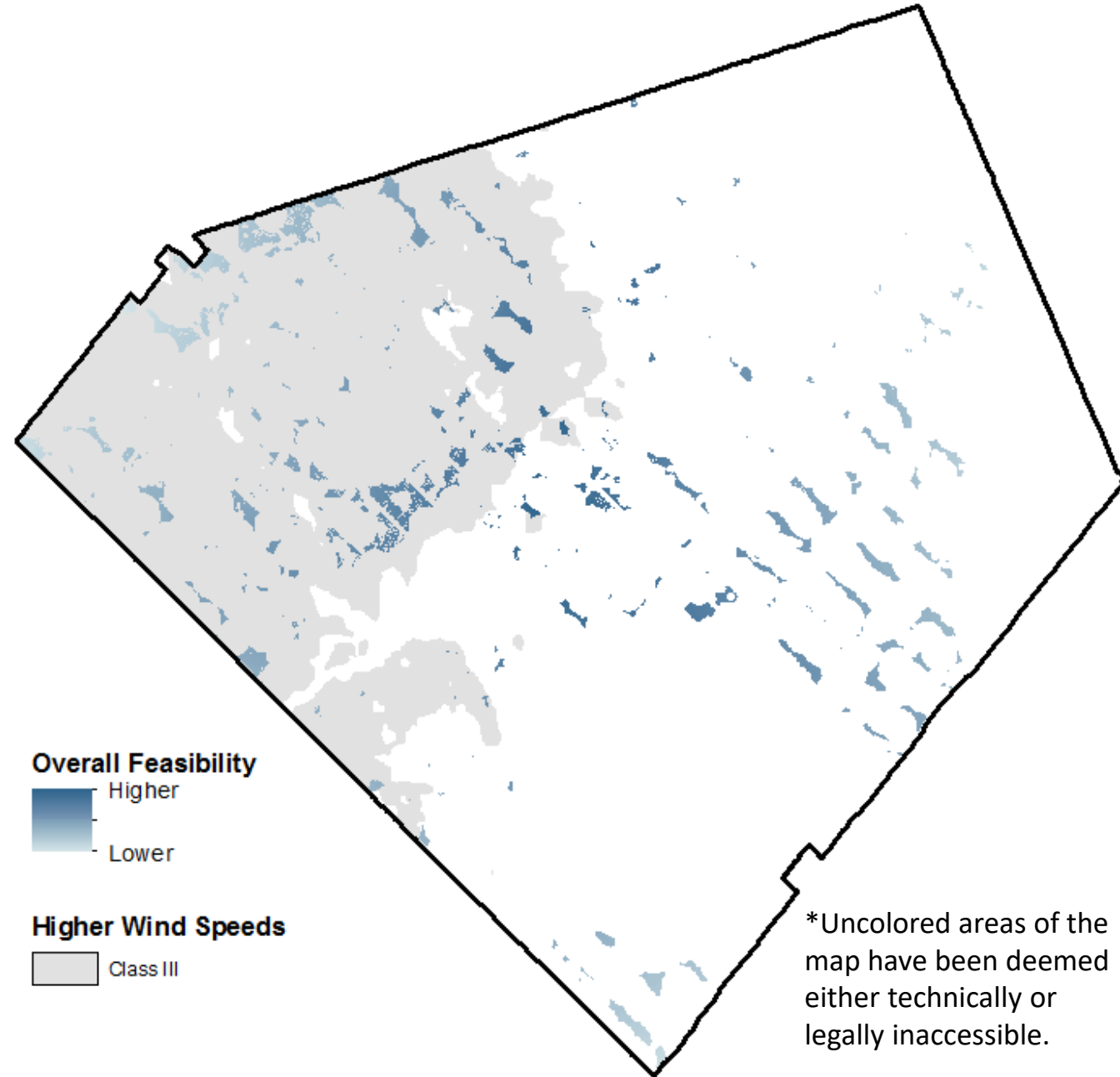


\*Uncolored areas of the map have been deemed either technically or legally inaccessible.

Within the areas of technical feasibility (green space) on the map, identify areas that you think are most promising or acceptable for solar energy development. Tell us why here

Within the areas of technical feasibility (green space) on the map, identify areas that you think are least promising or acceptable for solar energy development. Tell us why here:

# AREAS OF OPPORTUNITY FOR WIND FARMS



Within the areas of technical feasibility (blue space) on the map, identify areas that you think are most promising or acceptable for wind energy development. Tell us why here:

Within the areas of technical feasibility (blue space) on the map, identify areas that you think are least promising or acceptable for wind energy development. Tell us why here:

\*Uncolored areas of the map have been deemed either technically or legally inaccessible.